



Simpco Resources Group

www.simpcoresourcesltd.com



April 2016

Mission Statement

****January 1, 2012****

The purpose of Simpcw Resources Group (SRG) is to generate income and employment for Simpcw First Nation from the use of Simpcw Natural Resources using Sustainable and Environmentally responsible methods that respect the culture of the Simpcw First Nation.

General Principles:

- Preservation of Simpcw culture & heritage
- Respect for Environment
- Sustainability of Resources
- Control over business risk respecting that we are a community organization

Sam Phillips,
SRG General Manager

Forestry

We're planning to plant 80,000 seedlings on our Replaceable Forest License in May.

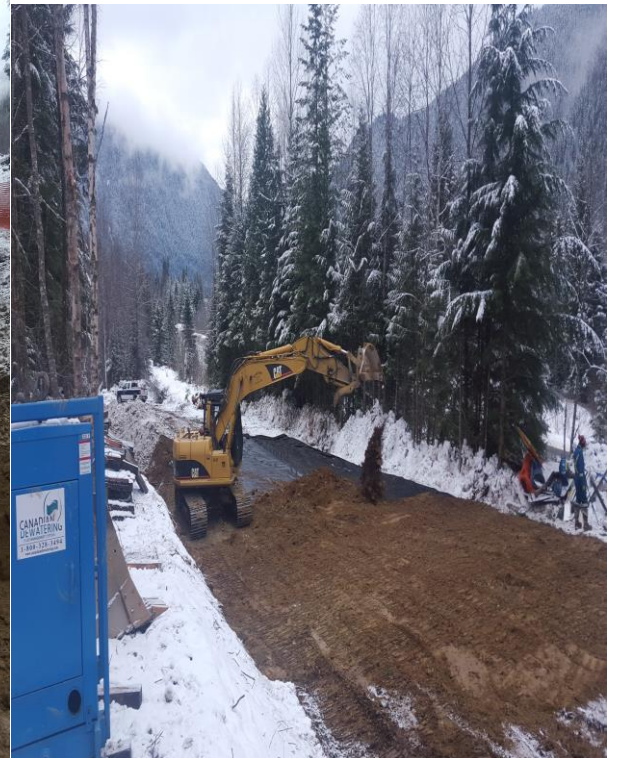
One contractor is currently working on our logging contract with West Fraser.

Block layout and Cutting Permit applications are continuing on our Replaceable Forest License.

Aggregates

We're in the process of submitting applications for tenure on a number of gravel pits in Simpcw Territory.

Sampling at the Louis Creek pit has been done and we are awaiting test results.



Photos submitted by Rob Celesta



SRG 2016/17 Donations Policy Update

Effective April 1, 2016 there will be only one form for all donation applications. *Please see SRG Policy insert*

Estsek Update

Estsek continues to provide environmental services to clients within Simpcwúl'ecw. Environmental monitoring for BC Hydro is ongoing in the Valemout and McBride area.

Estsek has confirmed funding for 2 summer student positions: collaboration project between Estsek and NRD. Duties will focus on Environmental Monitoring, studies, archaeology, GIS mapping and archives/research.

The bird nesting projects is well on its way. Developments require bird next surveys prior to vegetation removal. The first survey was completed for MOTI on the Vinsulla Passing Lane Project.

KMC Anomaly investigations have resumed. Environmental Monitoring within environmentally sensitive areas is ongoing.

On March 8th, Shelly and Angela presented an update to the Village of Valemout, Mayor, Council, and staff. The presentation was very well received and it is anticipated that Estsek will provide environmental services/projects for the Village of Valemout in the near future.

Both Angela and Shelly will be completing the Swift Water Rescue Training on April 18-20, 2016.

Expression of Interest for Community members and businesses

Simpcow Resources Group would like to invite community owned businesses and owner operators to submit expressions of interest for the 2016 field season. SRG utilizes sub-contractors for some phases of contract work and there may be opportunities for employment. Contact us to discuss potential opportunities and your availability.



Donations and Sponsorship Policy

SUBJECT OF POLICY: Donations and Sponsorship
DATE APPROVED: August 15, 2012
APPROVED BY: SRG Management Committee
EFFECTIVE DATE: Sept. 1, 2012

1. General Policy Statement

The Simpcw Resources Group of Companies (SRG) is responsible for the overall management of the economic development opportunities by defining and communicating the corporate philosophy, purpose, values, vision and direct strategic economic initiatives for the Simpcw Resources Group of Companies. SRG is committed to providing support in the creation of a healthy community by providing financial assistance to community members and/or community groups.

Donations and sponsorship is one of the methods that will be promoted by SRG to recognize and encourage individuals and or groups committed to the premise of developing a healthy community through cultural, educational, recreational or social activities.

The Simpcw Resources Group receives a number of requests from members and community groups throughout the year for donations and sponsorship. Having a framework for the assessment of applications ensures Management will be responsible for all applications for donations binding on the following criteria

- transparency and accountability to the community

- an unprejudiced assessment of each application or request received
- a standard process for applicants to follow when requesting donations or sponsorship

2.0 Assessment Criteria:

Requests for specific projects and events will only be considered under the following categories:

1. Cultural and or Language Activities
2. Recreational and sporting events or fees
3. Elder's Assistance

The perceived benefit of the event or activity to the individual or group making the application will be evaluated.

Additional requests or donations from other sources will be confirmed.

Individual or Group contribution to the costs by way of fundraising activity or other efforts will enhance the application.

As part of the approval process, individuals or groups may be requested to submit receipts or financial statements of activities utilizing the Simpcw Resources Group Donation Fund.

Once the application is reviewed, the applicant will be informed in writing of the reasons regarding the decision.

3.0 Application Process:

1. All applicants must complete a Simpcw Resources Group Fund Application.
2. Applications will be processed by SRG Management. Results will be reported at the following Management Committee.
3. The application must include a summary or copy of all expenditures or fees required for their participation in the event they are applying for.
4. Applications should be submitted at least one month in advance of the event or activity so the necessary steps to determine the eligibility for funding or sponsorship can be determined.
5. Exceptions may be made in some situations.

Donation Fund Value:

Applicants can apply for a maximum of a \$500 donation or 50% of team/organization fund raising efforts to a maximum of \$1,000.