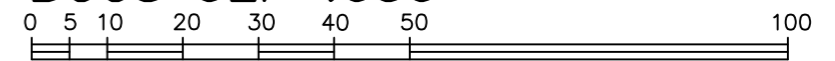


COMPILED PLAN OF LOT 242
NORTH THOMPSON INDIAN
RESERVE No. 1

SCALE 1 : 1000

BCGS 92P .030



All distances are in metres

THE INTENDED PLOT SIZE OF THIS PLAN IS 432mm IN WIDTH BY 560mm IN HEIGHT (C SIZE) WHEN PLOTTED AT A SCALE OF 1:1000.

PREPARED ON 27th DAY OF JANUARY, 2017

LOT 242 DEALT WITH BY THIS PLAN REPLACES LOT 77-2 PLAN 99527 CLSR.

THIS PLAN IS COMPILED FROM PLAN 99527 CLSR, AND PLAN 66587 CLSR.

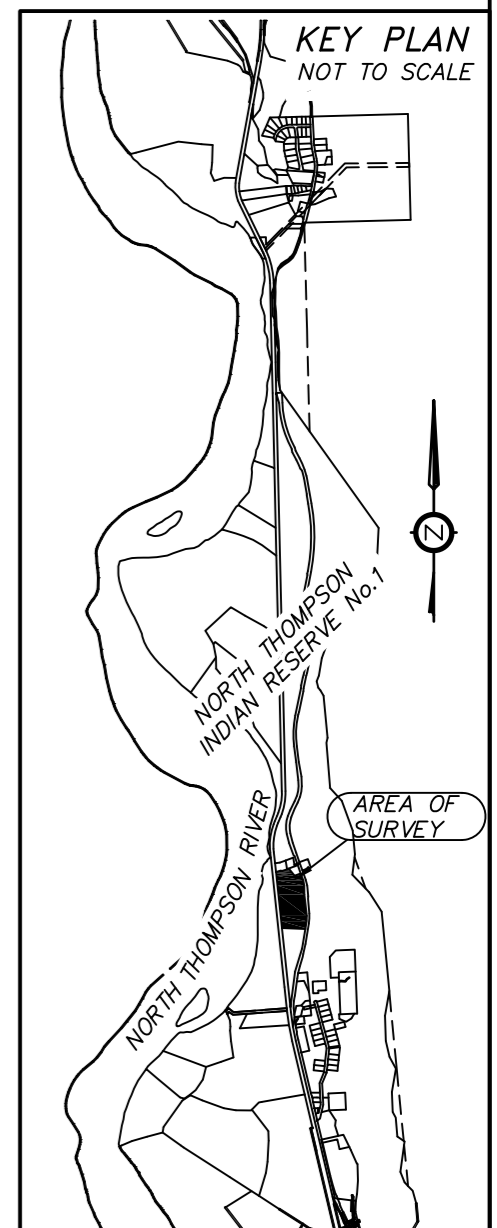
LEGEND

BEARINGS ARE ASTRONOMIC AND ARE DERIVED FROM PLAN 99527 CLSR

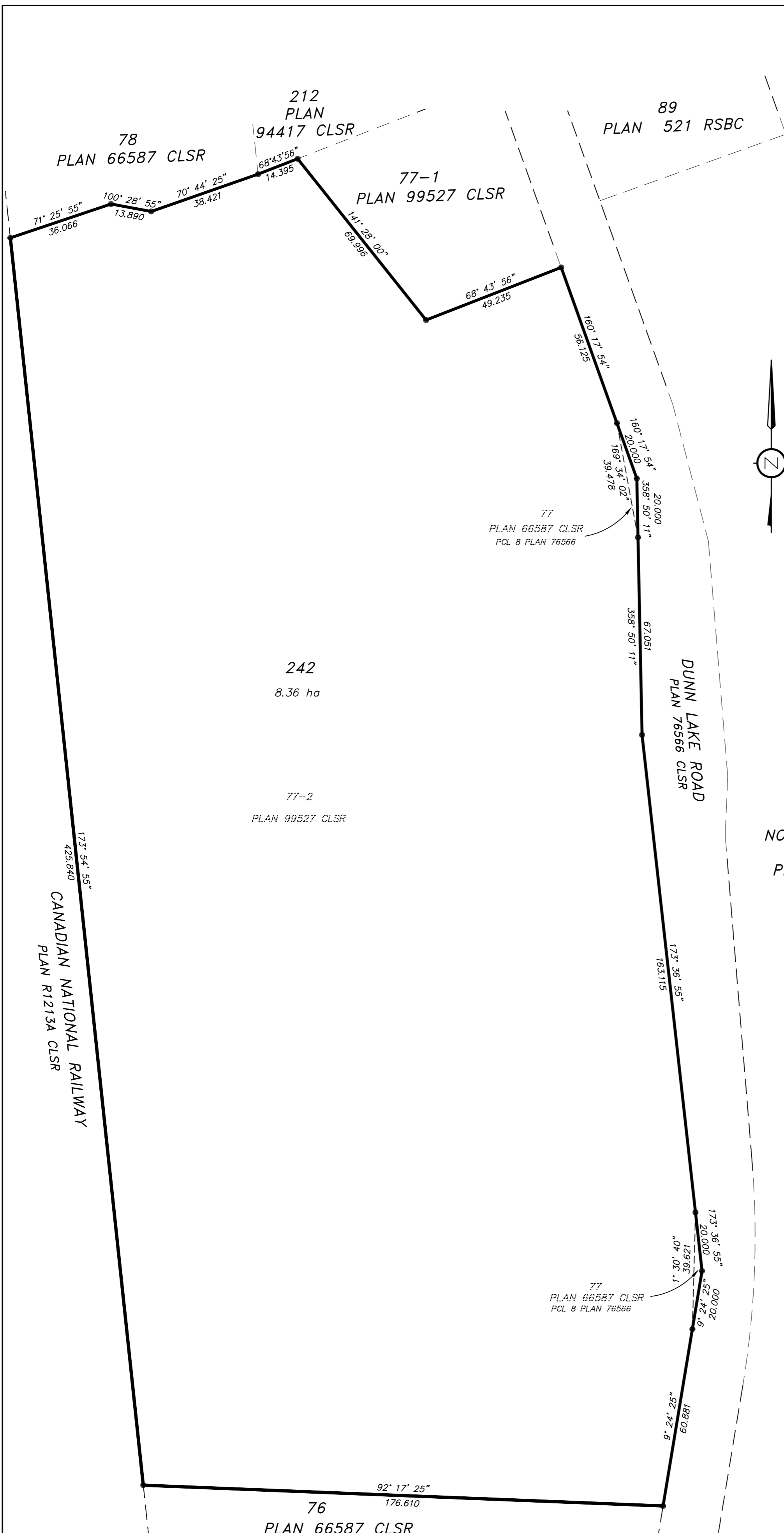
● ...COPIED SURVEY MONUMENTS SHOWN THUS
— ...LAND DEALT WITH BY THIS PLAN BOUNDED THUS

THIS PLAN SHOWS HORIZONTAL GROUND-LEVEL DISTANCES IN METRES

THE BOUNDARY INFORMATION ON THIS PLAN HAS BEEN COMPILED FROM INFORMATION AS NOTED, AND NO NEW FIELD WORK WAS PERFORMED TO VERIFY THE MONUMENTS, MEASUREMENTS OR POTENTIAL BOUNDARY ENCROACHMENTS.



NORTH THOMPSON
IR No. 1
PLAN 223 CLSR



RE: SECTION 38, CANADA LANDS REGULATIONS
CERTIFIED CORRECT

ON THE 27 DAY OF JANUARY, 2017

SCOTT RHODES C.L.S., B.C.L.S.

DEPARTMENT OF NATURAL RESOURCES
RE: SECTION 31, CANADA LANDS ACT

APPROVED

ANDREW C. BREBNER C.L.S. DATE
MANAGER, CADASTRAL SERVICES WEST & NORTH
SURVEYOR GENERAL BRANCH

CHECKLIST No. XXXX
PROJECT NUMBER: 201610218

Allnorth
Land Surveyors
#301-7 ST. PAUL STREET WEST,
KAMLOOPS, BC, V2C 1E9
TEL: 250-374-5331 FAX: 250-374-5332
DRAWN BY: SR, TE
DRAWING NO: 15LS0646 COMPILED LOT 77.dwg
FILE NO: 15LS0646
FB: -- P: --